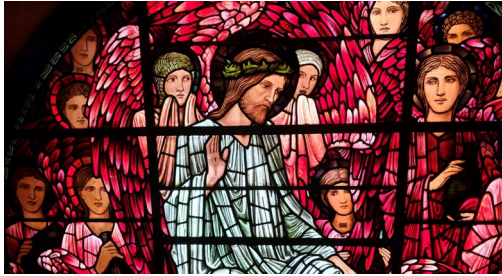


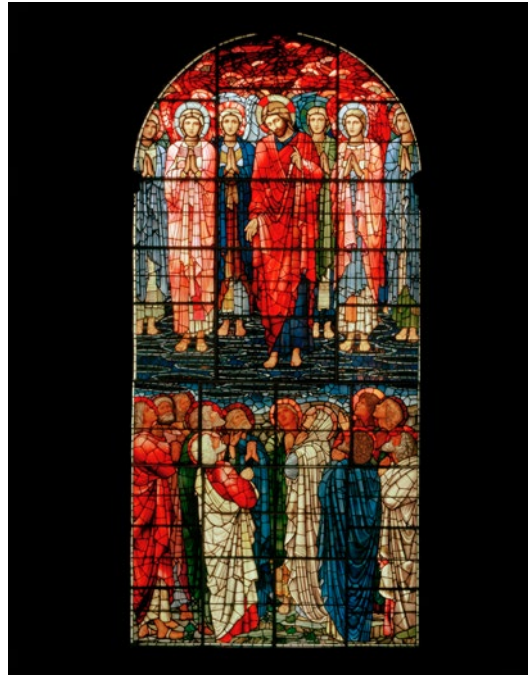
Birmingham Cathedral's beautiful windows



Built in 1715, St Philip's became a Cathedral in 1905 and is one of the oldest buildings in Birmingham still used for its original purpose.

The church became a cathedral in 1905, soon after Birmingham became a city in 1899. Some of the most beautiful features in the building are the stained glass windows, designed by Edward Burne-Jones and William Morris, depicting scenes of Christ's life.

Use this booklet to make notes about the windows, beliefs, practices and traditions that are central at the Cathedral.



The Ascension Window

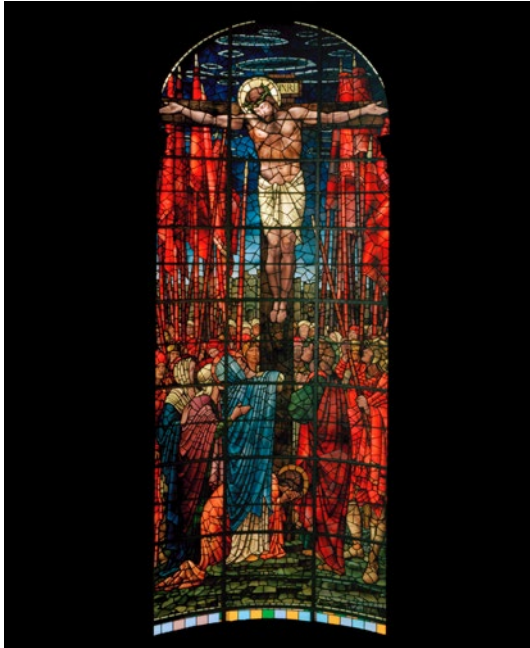


The Nativity Window



This content is licensed under a [Creative Commons Attribution 4.0 International License](https://creativecommons.org/licenses/by/4.0/).





The Crucifixion Window



The Last Judgement Window

Key beliefs, practices and useful terms
