

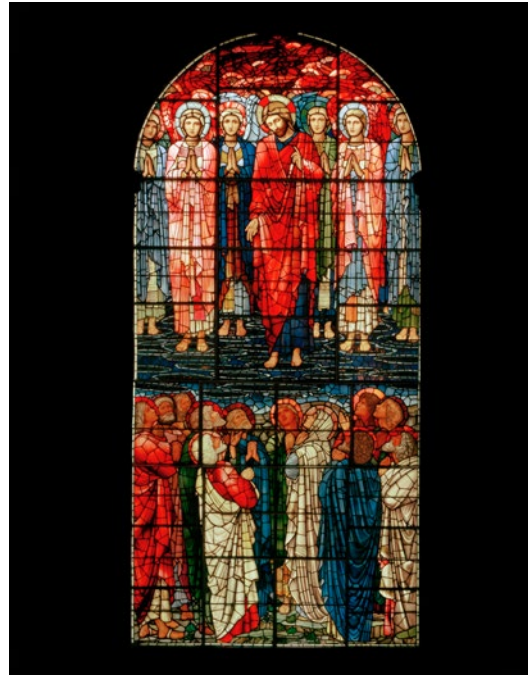
## Birmingham Cathedral's beautiful windows



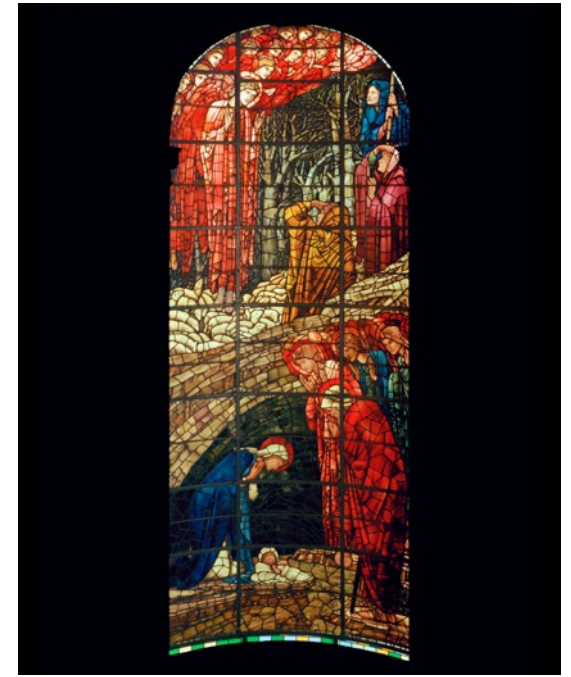
Built as a Christian place of worship in 1715, St Philip's church became a Cathedral in 1905.

The church became a cathedral soon after Birmingham became a city. Some of the most spectacular features in the building are the stained-glass windows. They were designed by Edward Burne-Jones and William Morris and show scenes from the life of Christ.

\_\_\_\_\_ has made this super leaflet about the windows!



**The Ascension Window**

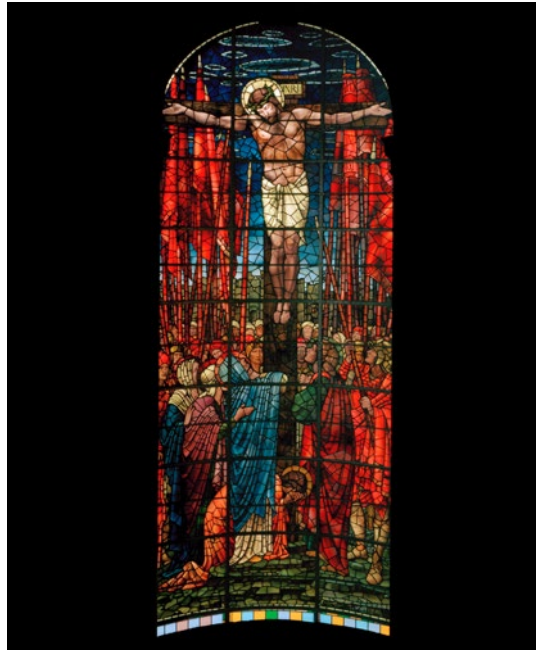


**The Nativity Window**

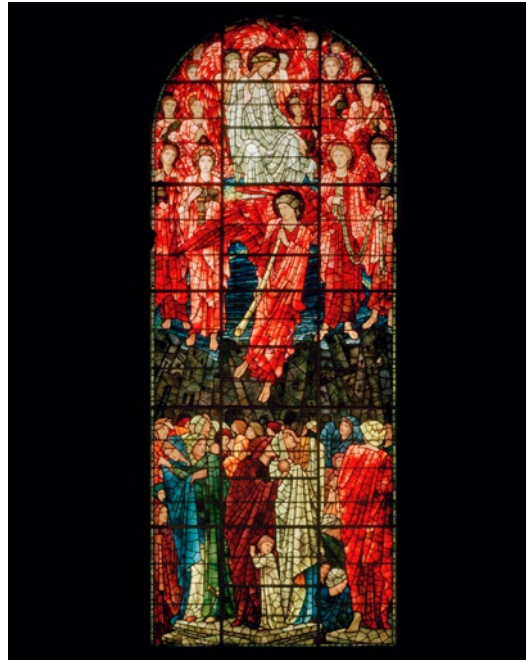


This content is licensed under a [Creative Commons Attribution 4.0 International License](https://creativecommons.org/licenses/by/4.0/).





**The Crucifixion  
Window**



**The Last Judgement  
Window**

Who designed the windows?

What makes stained-glass so special?

What has made you stop and think?



This content is licensed under a [Creative Commons Attribution 4.0 International License](https://creativecommons.org/licenses/by/4.0/).

